



**G&G ARMAMENT**  
AIRSOFT GUNS & ACCESSORIES

**DEALER**

**WWW.GUAY2.COM** COPYRIGHT© 2009 G&G ARMAMENT PRINTED IN TAIWAN

**ADDRESS** 11F-3, NO. 27, Lane 169, Kangning St., Shijr City, Taipei County 221, TAIWAN

**TEL** +886-2-2692-2000 **FAX** +886-2-2692-4000

**E-MAIL** Sales Department : b2b@guay2.com  
Technology support Department : support@guay2.com



**G&G ARMAMENT**  
AIRSOFT GUNS & ACCESSORIES



**LR300**  
6mm Electric Semi  
/ Full Auto System

**INSTRUCTION  
MANUAL**

The gun is made under permission of Z-M  
Weapons' worldwide exclusive licensee  
Evolution International S.r.l., Italy.





# LR300 INSTRUCTION MANUAL

6mm Electric Semi / Full Auto System

## WARNING



Adult supervision required. Always wear safety goggles when using this product. Misuse or careless handling of this product may cause injury. May be hazardous up to 50 meters.



You may be liable for damaging public or personal property or for injuring a person or an animal even if you only meant to shoot as a "practical joke." Always observe good manners and enjoy fun sport shooting.



Never direct the muzzle towards a person, animal or in any direction. That may cause harm or damage to the third party.



Select a safe place for operating the air gun, avoid places where people and cars are around.



Make sure to put the barrel and safety cap on the muzzle, except when you are shooting. Do this to prevent accident, discharge of BBs and also for dust protection purpose. Never pull the trigger while the barrel and the safety cap is attached.



Safety procedures:  
1. Attach the safety cap to the muzzle.  
2. Set the selector lever to the safety position.  
3. Remove the magazine.  
4. Remove the battery.



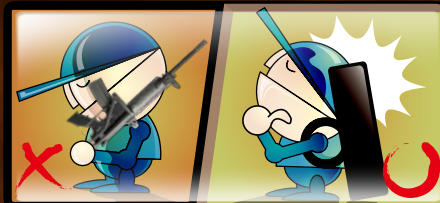
Looking into the muzzle is extremely dangerous regardless of BBs having been loaded or not. If you get hit in the eye by a BB pellet, you may in worst case, lose your eye sight.



G&G ARMAMENT  
AIRSOFT GUNS & ACCESSORIES

## WARNING

Operation of this air gun for competition use is restricted to users of 18 years old or more. Careless shooting and wrong operation are dangerous, causing eye damage or other injury.



When you carry the air gun, attach the safety cap, set the selector lever to the safety position and always put the air gun in a case or bag.



Activating the trigger carelessly is extremely dangerous. Never put your finger on the trigger unless the safety cap is removed and you are ready to shoot a target.



When shooting the air guns for target practice or in a game situation, you and all participants must wear safety goggles or other eye protective gear. Also, pay attention to ricochets. It is very important to pay attention to third parties other than the participants.



There may be cases where some BBs remain in the gun after the magazine has been removed. After removal of the magazine, direct the muzzle towards a safe direction and pull the trigger to confirm that there are no BBs remain in the gun, then attach the safety cap.



Always attach the safety cap to the muzzle, remove the battery and store the air gun in a case or bag and at a place that is out of reach by children.



Disassembling or modifying the gun may adversely affect the performance and make it dangerous. "It may be against the Law."



# LR300 INSTRUCTION MANUAL

6mm Electric Semi / Full Auto System

## CONTENTS

**WARNING** | P01.02  
**COMPONENTS** | P03  
**SELECTOR & SAFETY SETTING** | P04

**BATTERY SETTING** | P05  
**SETTING MAGAZINE** | P06  
**SIGHT ADJUSTMENT** | P07  
**MOVABLE PARTS** | P08  
**FIRING** | P09.10

**HOP-UP ADJUSTMENT** | P11  
**MAINTENANCE** | P11  
**TROUBLE SHOOTING** | P12  
**PARTS LIST** | P13.14



## COMPONENTS



**G&G ARMAMENT**  
AIRSOFT GUNS & ACCESSORIES



Never operate the Selector while pulled the trigger. Pull the trigger with the Selector being set at safe mode may damage the air gun.

## SELECTOR & SAFETY SETTING



### SAFETY ON THE TRIGGER CANNOT BE PULLED

When not firing the gun or during storage, always set the selector to the Safe Mode and attach the protective cap on the muzzle.



### SEMI AUTO SINGLE SHOT

The gun will fire one shot each time as pull the trigger.



### FULL AUTO AUTOMATIC FIRING

The gun will fire automatically while the trigger remains pulled.



Set the selector in correct position; otherwise malfunction may occur.



## BATTERY SETTING



Remove the Q.D. sling swivel and sling swivel base. (If attached)



Pull open the handguard slightly with a proper tool.



Move handguard forward to open.



Connect battery plug with the connector then insert the battery into the handguard.



Put the handguard back on.

### RECOMMENDED BATTERY TYPE



G-11-019  
NI-MH 9.6V 1400



**G&G ARMAMENT**  
AIRSOFT GUNS & ACCESSORIES

### CAUTION

Always use the G&G BB pellet or diameter 5.94 ~ 5.96 mm BBs for this air gun. G&G shall not be held responsible for any damage or accidents arising from the use of pellets supplied by other manufacturers.

## SETTING MAGAZINE



Push the button to release the magazine.



Open the cover of magazine.



Load G&G 5.95mm BB pellets into the magazine.  
The magazine is capable of holding approximately 450 pellets.



After the BB pellets had been loaded, close the cover and turn the gear on the bottom of the magazine until the sound changes.



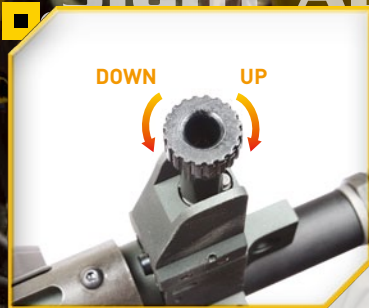
Set the magazine upward.



Connect firmly till a click sound is heard.

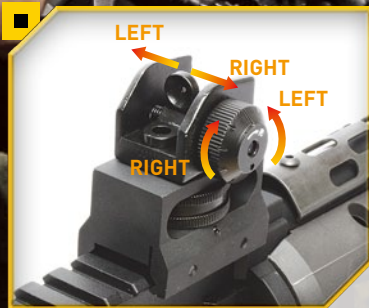


## SIGHT ADJUSTMENT



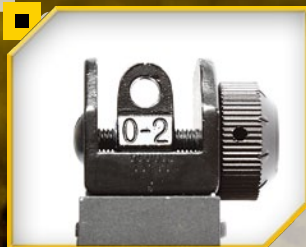
**Front Sight Adjustment**

For front sight up-down adjustment.  
Turning clockwise: To correct high shots.  
Turning counterclockwise: To correct low shots.



**Windage Adjustment Knob**

Turning clockwise: To correct the shots leaning to the left.  
Turning counterclockwise: To correct the shots leaning to the right.

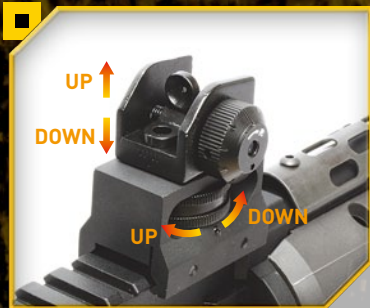


For common shooting

**Battle Sight** (FLIP MANUALLY)



For precision shooting



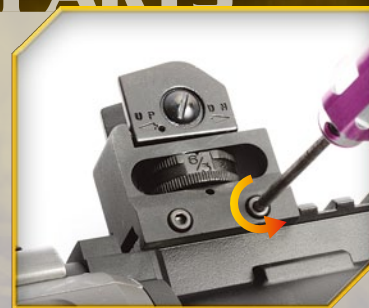
**Elevation Adjustment**

Turning clockwise: To correct high shots.  
Turning counterclockwise: To correct low shots.

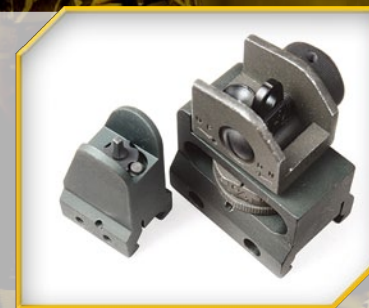


**CAUTION** ■ Make sure not to lose the attachment tool.

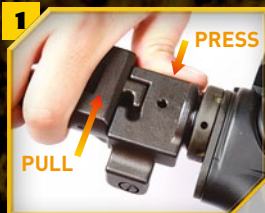
## MOVABLE PARTS



Unscrew and take the fixing screws off to remove the front sight and rear sight.



**Detachable Front Sight & Rear Sight**



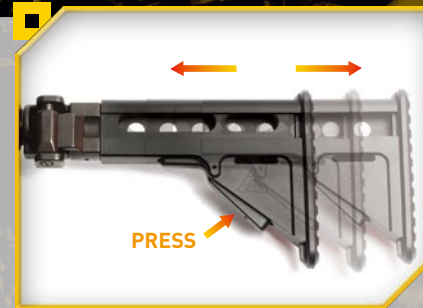
Press the stock base with the thumb and pull up.



**Folding/Retractable Stock**



Fold the stock to left side of the gun.



Press the release lever to change position.



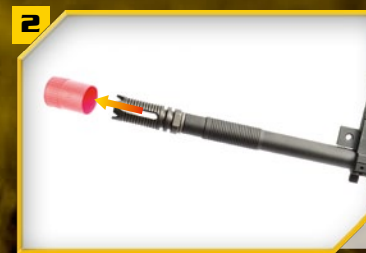
# LR300 INSTRUCTION MANUAL.

6mm Electric Semi / Full Auto System

## FIRING



Make sure to install the magazine upwards and into the body. It had been installed properly when you heard a click sound.



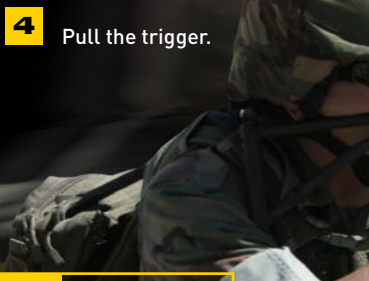
Remove the protective cap only when you are ready for firing the gun.



Set the Selector Lever to Semi or Full Auto.

### CAUTION

There are possible cases that no firing occurs after pulling the trigger in the semi auto mode. In such cases, do not pull the trigger furiously. Fire 5 to 6 shots in the full auto mode and then return to the semi auto operation.



Pull the trigger.

Activating the trigger carelessly is extremely dangerous. Never place your finger on the trigger unless the protective cap is removed and you are ready to shoot a target. Blank firing may occur when triggered, this is the normal operation of the gun.



**G&G ARMAMENT**  
AIRSOFT GUNS & ACCESSORIES

### WARNING

Make sure no dirt gets into the chamber to avoid clogging of bullets. The hopping up operation may be unstable for 200 to 300 rounds after using silicone oil, this is the normal operation for the gun.

### 1. After Operation

Remove the magazine, direct the muzzle into a safe direction then fire the gun in semi-auto mode for a few shots. Set the selector to the safe position. Always disconnect the battery and attach the protective cap whenever you do not operate the air gun.

### 2. Cautions on Motor and Battery

Charge the battery if the firing cycle becomes slow. Give the air gun a rest for 5 to 10 minutes after firing about 500 rounds, in order to ensure long service lives of the motor and battery.

### 3. When Bullets Are Clogged

If bullets are clogged, remove them and apply a few drops of G&G silicone oil into the chamber from the magazine entrance. Apply G&G silicone oil for 0.5 to 1 sec, to obtain smooth continuous firing.



Never use CRC-556, WD40 or other corrosive lubricant.



# LR300 INSTRUCTION MANUAL

6mm Electric Semi / Full Auto System

## HOP-UP ADJUSTMENT



**CAUTION**  
Never hold the gun sideways as the BB pellets will curve right or left. This is due to the HOP-UP system.

Turning hop-up dial for adjusting the ideal flight pattern of the BB pellet. The hop-up dial can only be turned a certain amount. Turning to much will damage the unit.



### MAINTENANCE

**1.** Drop a few drops of silicone oil or Teflon oil from the pellet entrance. Insert BB pellets into the magazine and fire around 1 to 2 magazines.

**2.** To complete the cleaning, use the cleaning rod (with cotton), to remove excess oil.

**Maintenance When Bullet Speed Becomes Low**

**CAUTION**  
Do not jam the cleaning rod into the barrel by force. Should the BB's remains inside the barrel after following the instruction above, with the protection cap over the barrel, point the gun to a safe direction and discharge any loosened BB's in semi-automatic mode.

**1.** Return the hop up dial to the Normal position and insert the cleaning rod from the lead edge of the barrel.

**2.** To remove clogged BB's, carefully insert the cleaning rod inside the barrel with the flat tip facing down as shown below.

**Removing Clogged Bullets**



**G&G ARMAMENT**  
AIRSOFT GUNS & ACCESSORIES

**CAUTION**  
When a problem occasion please check the steps below, other problems please turn to your dealer or contact us.

## TROUBLE SHOOTING

SYMPTOM	POTENTIAL	CORRECTIVE
No operation at all	Selector lever is set to safety. Battery is not charged. Battery connector is disconnected. The + and - of battery connector is reverse. Expired motor life (50,000 to 60,000 rounds) or poor electrical connection.	Set the selector lever to Semi or Full Auto. Charge the battery. Connect the connector. Connect the connector correctly (check the fuse) Replace the dead motor (can be purchased from local dealer or directly G&G). Check and repair the contacts.
Although motor is revolving, no pellet can be fired	Pellets are clogged inside the magazine. Pellets are clogged in the chamber. Faulty gear.	Insert the charging rod into the magazine and move up and down a few times to remove clogged pellets. Remove clogged pellets using the cleaning rod. Purchase the replacement gear from your dealer or G&G and repair.
Impossible full-auto operation (automatic firing)	Insufficient battery power. Faulty pellet feed of magazine. Poor electrical connection.	Charge the battery. Repair clogging of the magazine. Consult your dealer or us for overhaul maintenance or repair.
Shooting distance becomes shorter	Damaged or worn chamber set. Damaged or worn piston set (O-ring, piston spring) Something is jammed in the inner barrel Faulty BB pellets (too small or heavy) Shortage of silicone oil Gear problem caused by too many blank firing	Replace the replacement parts (Purchasing from your dealer or G&G) Use the cleaning rod and clean the inner barrel. Use the genuine G&G Pellets. Drops few drops of silicone oil from upper the chamber.
Too loud operating noise	Worn or damaged gear Gear problem caused by too many blank firing Damaged or worn chamber set.	Consult your dealer or G&G for overhaul maintenance, part replacement (gear, etc.) or repair.
Pellets being fallen out from barrel end	No hop setting. Faulty BB Pellets (too small or heavy)	Turn the hop adjustment lever toward Hop. Use the G&G Pellets.
If gun gets wet	Stop operation immediately, disconnect the battery, wipe off water from inside the main body and the battery. After completely dry, carry out trial firing. If the unit is not operational, please contact your local dealer for repair.	

## DISCLAIMER

- Accessories pictured are not always included with product.
- Adult supervision required for users under 18 years of age.
- The purchaser and user should conform to all laws governing and ownership of airsoft guns.

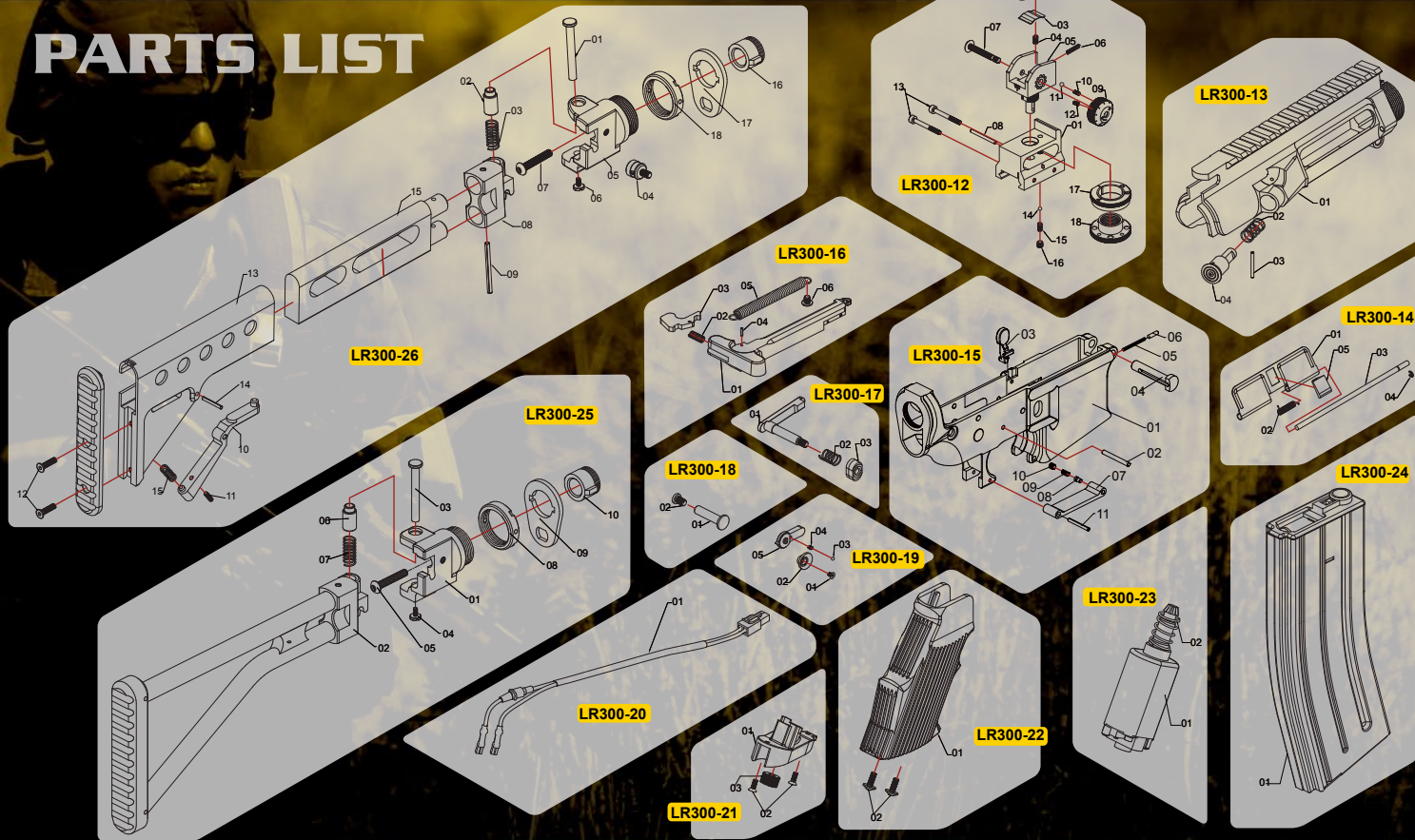
- All products in this manual are imitation firearms and are not intended nor represented to be comparable in design, appearance, or function to any actual firearm offered by other manufacturers.
- The Z-M Weapons logo and name, LR-300, and the LR-300 gun designs are trademarks and property of Z-M Weapons, U.S.A., used by G&G with permission of Z-M Weapons' worldwide exclusive licensee Evolution International S.r.l., Italy.



# LR300 INSTRUCTION MANUAL

6mm Electric Semi / Full Auto System

## PARTS LIST



**G&G ARMAMENT**  
AIRSOFT GUNS & ACCESSORIES

No.	Parts Name
LR300-01	Flash suppressor set
LR300-02	Outer barrel
LR300-03	Outer barrel extender (for Long Type)
LR300-04	Outer barrel extender (for Short Type)
LR300-05	Inner barrel set (for Long Type)
LR300-06	Inner barrel set (for Short Type)
LR300-07	Handguard set
LR300-08	Hop-Up rubber set
LR300-09	Gear box set
LR300-10	Front sight set
LR300-11	Hop-Up set
LR300-12	Rear sight set
LR300-13	Upper receiver set
LR300-14	Dust cover set
LR300-15	Lower receiver set
LR300-16	Charging handle
LR300-17	Magazine catch set
LR300-18	Rear receiver lock pin set
LR300-19	Selector lever set
LR300-20	Wire set
LR300-21	Grip bottom plate set
LR300-22	Grip set
LR300-23	Motor set
LR300-24	Magazine
LR300-25	Folding stock set (for Standard Ver.)
LR300-26	Retractable folding stock set

